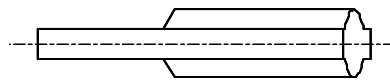
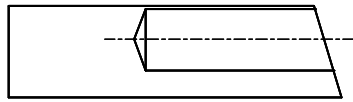
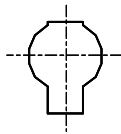

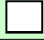

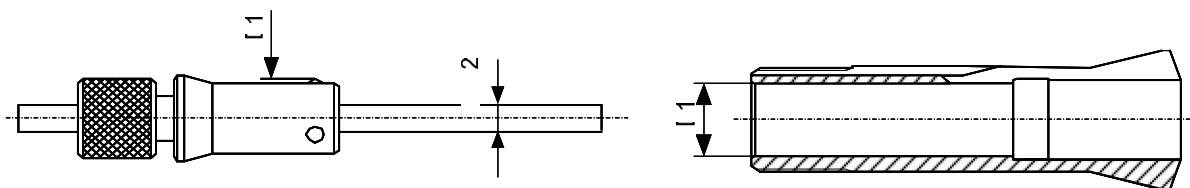


Obturbateurs pour pinces - Dichtgummi - Rubber seals



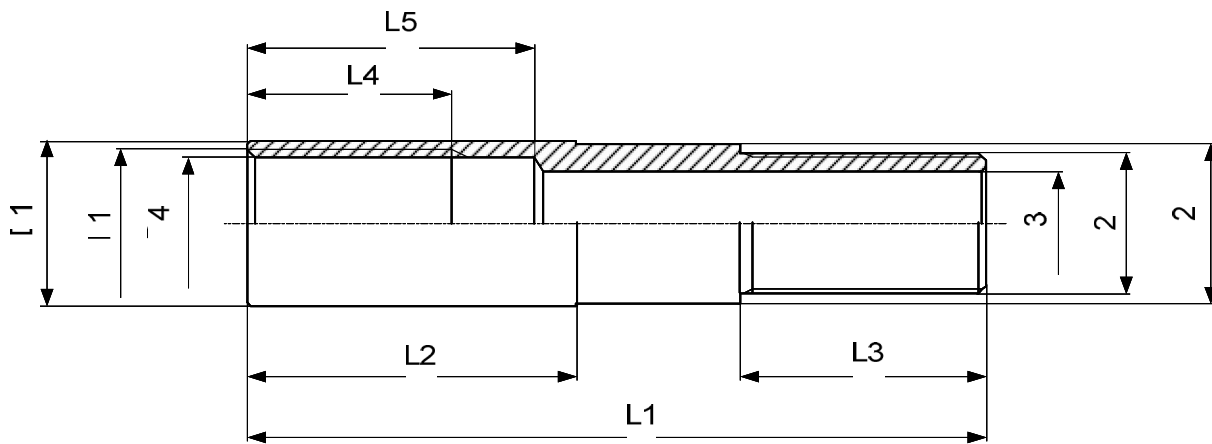
Art.	Type	Obtur.	Pos.			
72-1820	B 34	76-832	50	min. - 11.99	min. - 11.99	min. - 9.99
			40	12.00 - max.	12.00 - max.	10.00 - max.
72-2007	B 46	76-832	70	min. - 27.99	min. - 23.99	min. - 19.49
			60	28.00 - max.	24.00 - max.	19.50 - max.
76-201	F 20	76-832	10			
76-71	F 22	76-832	10			
76-22	F 27	76-832	50	min. - 20.99	min. - 18.00	min. - 15.00
			40	21.00 - max.	18.01 - max.	15.01 - max.
76-63	F 30	76-832	50	min. - 16.00	min. - 15.50	min. - 12.50
			40	16.01 - max.	15.51 - max.	12.51 - max.
76-64	F 25	76-832	10			
76-87	F 20	76-832	10			
76-93	F 28	76-832	50	min. - 14.99	min. - 12.99	min. - 10.99
			40	15.00 - max.	13.00 - max.	11.00 - max.
76-221	F 32	76-832	50	min. - 22.49	min. - 19.49	min. - 15.99
			40	22.50 - max.	19.50 - max.	16.00 - max.
76-94	F 35	76-832	70	min. - 7.99	min. - 7.99	min. - 7.99
			60	8.00 - max.	8.00 - max.	8.00 - max.
76-2010	F 35	76-832	60			
76-2011	F 35	76-832	40			
76-2012	F 35	76-832	60			
76-2013	F 35	76-832	60			
76-72	F 38	76-832	70	min. - 14.99	min. - 12.99	min. - 7.99
			60	15.00 - max.	13.00 - max.	8.00 - max.
76-2004	F 38	76-832	70	min. - 14.99	min. - 12.99	min. - 10.59
			60	15.00 - max.	13.00 - max.	10.60 - max.
76-99	F 42	76-832	70	min. - 19.99	min. - 17.99	min. - 11.99
			60	20.00 - max.	18.00 - max.	12.00 - max.
76-81	F 48	76-832	70	min. - 23.99	min. - 7.99	min. - 7.99
			60	24.00 - max.	8.00 - max.	8.00 - max.
76-2006	F 48	76-832	70	min. - 23.99	min. - 20.79	min. - 16.99
			60	24.00 - max.	20.80 - max.	17.00 - max.
76-359	F 66	76-836	100			
76-830	F 16	M505220	Tuyau silicon dia. 4			
78-334	P 25	M505220	Tuyau silicon dia. 4			
80-1923	W 25	M505220	Tuyau silicon dia. 4			

Butées de profondeur - Tiefenanschläge - Adjustable depth stops



Art.	D1 min - max	D2	Employée pour - Verwendet für - Used for
68-99100	3.90 - 4.40	1.2	B 8 ; F 6
68-99101	4.50 - 5.40	1.2	F 7 ; W 8 ; W 9
68-99102	5.40 - 6.60	1.5	F 7 ; F 8
68-99103	6.50 - 7.40	2	F 9 ; F 10 ; W 10
68-99104	8.00 - 8.80	2.5	W 12
68-99105	9.30 - 10.90	2.5	B 15 ; F 12 ; F 13 ; F 14 ; F 15 ; W 15
68-99106	12.00 - 13.80	2.5	F 16 ; L 20 ; W 16.5
68-99107	13.50 - 15.10	5	F 17.46 ; F 18 ; W 20
68-99108	15.00 - 16.80	5	B 23
68-99109	16.40 - 18.20	7	B 23 ; F 20 ; F 22 ; F 23.8
68-99110	16.50 - 19.95	5	W 25
68-99111	19.80 - 22.80	7	F 25 ; F 26
68-99112	22.00 - 23.80	7	F 27 ; F 28
68-99113	23.00 - 24.80	7	B 32 ; W 30
68-99114	24.60 - 27.80	7	F 30 ; F 32 ; W 31.75
68-99115	27.60 - 30.80	7	F 34 ; F 35
68-99116	30.00 - 33.80	7	F 38
68-99117	34.80 - 40.70	10	B 45 ; F 42
68-99118	39.80 - 44.70	10	F 48

Embout fileté - Gewindeadapter - Threaded adapter



Embout fileté pour serrer les pinces tirées.

L'utilisation de ces embouts évite l'usinage du filet en dents de scie du côté de la pince.

Gewindeadapter zum Spannen von Zugspannzangen.

Die Verwendung dieses Adapters umgeht die Fertigung des Sägen Gewindes für die Aufnahme der Spannzanze.

Threaded adapter to clamp pull-type collets.

When using these adapters there is no need to machine the buttress thread on the collet side.

Type	Art.	F1	F2	D1	D2	D3	D4	L1	L2	L3	L4	L5
W 20 80-4	459-5191	SV20	M19x0.75	22.3	21.5	14	17.8	90	40	30	25	35
		$\varnothing 19.7 \times 1.666 \nabla 45^\circ$										
W 25 80-5	459-2751	SV25	M24x0.75	28	27.5	21	22.7	90	50	30	35	45
		$\varnothing 24.7 \times 15^\circ \nabla 45^\circ$										